

**FD-80 Plus****Standard Features:**

Construction painted gray panels.

Big loading door (opening of 180°).

Spark ignition systems.

Front suspension by 2 strong and high-resistant wheel.

Inverter drive system.

Self-cleaning lint screen.

Models available in electric, gas or steam heating.

REVERSE ACTION: All models offer the reverse turning of the drum.

Axial airflow.

COOL DOWN: Anti-wrinkle at the end of cycle.

**Optional Features for Plus Models:**

Integrated fire extinguishing system (S.A.F.E.).

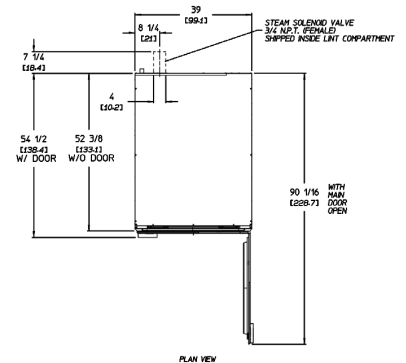
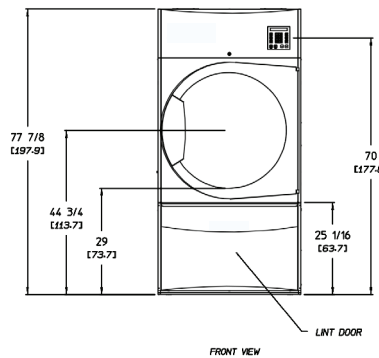
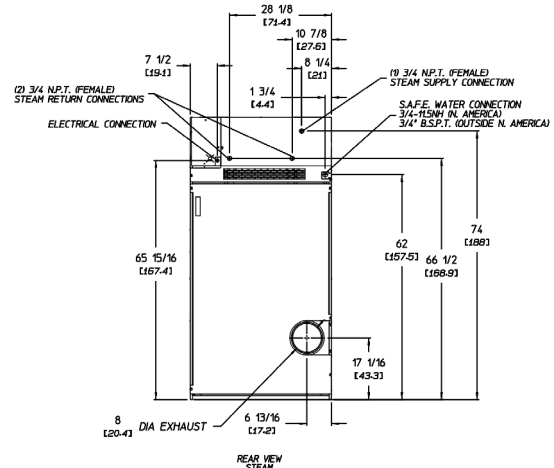
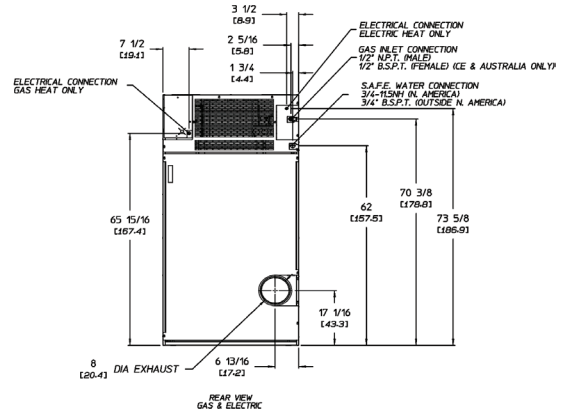
Stainless steel drum.

Double pane glass door.

Stainless steel front panel.

## FD-80 Specifications

Maximun Capacity	80 lb	36.28 kg
Tumble Diameter	37"	93.98 cm
Tumble Depth	35-7/16"	90.01 cm
Tumble Volume	22.05 cu.ft	624.39 L
Tumble/Drive Motor	1 hp	0.74 KW
Blower/Fan Motor*	3/4 hp	0.56 KW
Cabinet Width	39"	99.06 cm
Cabinet Depth	52-3/8"	133.03 cm
Cabinet Height	77-7/8"	79.69 cm
Door Opening (Diameter)	31-3/8"	90.01 cm
Door Sill Height	29"	73.66 cm
Water Connection	3/4" - 11.5 NH (North America) 3/4" - B.S.P.T (Outside North America)	
Dryers per 20"/40" Container	8/16	
Dryers per 48"/53" Container	22/26	
<b>Gas</b>		
Voltage Available	120-480V 1,3ø 2,3w 50/60 Hz	
Approximate Net Weight	700 lb	317.52 kg
Approximate Shipping Weight	720 lb	317.52 kg
Airflow	50 Hz 880 cfm	24.91 cmm
	60 Hz 920 cfm	26.05 cmm
Heat Input	135,000 Btu/hr	34,000 Kcal/hr
Exhaust Connect. (Diameter)	8"	20.32 cm
Intel Pipe Connection	1/2" N.P.T. (Male) 1/2" BSPT (Female)(CEand AustralianOnly)	
<b>Electric</b>		
Voltage Available	280-480V 1,3ø 2,3,4w 50/60 Hz	
Approximate Net Weight	710 lb	322.05 kg
Approximate Shipping Weight	730 lb	21.80 kg
Airflow	50 Hz 770 cfm	21.80 cmm
	60 Hz 740 cfm	20.95 cmm
Exhaust Connect. (Diameter)	8"	20.32 cm
Oven Size	KW	Btu/hr Kcal/hr
	22	75,067 18,917
	20.4	69,608 17,541
18,5	63,125 15,907	
<b>Steam</b>		
Voltage Available	280-480V 1,3ø 2,3w 50/60 Hz	
Approximate Net Weight	830 lb	376.48 kg
Approximate Shipping Weight	865 lb	392.36 kg
Airflow	50 Hz 854 cfm	24.18 cmm
	60 Hz 1,025 cfm	29.02 cmm
Steam Consumption (Max)	140 lb/hr	63.50 kg/hr
Operating Steam Preasure	150 psi	10.34 bar
Exhaust Connect. (Diameter)	8"	20.32 cm
Boiler HP (Normal Load)	3.6 Bhp	
Supply Connection	(1) 3/4" N.P.T. (Female)	
Return Connection	(2) 3/4" N.P.T. (Male)	



Electrical Service Specifications					
GAS & STEAM HEAT					
SERVICE VOLTAGE	PHASE	WIRE SERVICE	APPROX AMP DRAW		CIRCUIT BREAKER
			60 Hz	50 Hz	
120	1ø	2	9.8	--	15
208	1ø	2	10	--	15
220	1ø	2	5	5	15
230	1ø	2	5	5	15
240	1ø	2	5	5	15
208	3ø	3	4.45	--	15
220	3ø	3	8.35	4.45	15
230	3ø	3	8.35	4.45	15
240	3ø	3	8.35	4.45	15
380	3ø	3	--	2.73	15
400	3ø	3	--	2.73	15
416	3ø	3	--	2.73	15
440	3ø	3	4.53	--	15
460	3ø	3	4.53	--	15
480	3ø	3	4.53	--	15

Electrical Service Specifications						
ELECTRIC HEAT						
SERVICE VOLTAGE	PHASE	WIRE SERVICE	KW	APPROX AMP DRAW		CIRCUIT BREAKER
				60 Hz	50 Hz	
<b>SINGLE-PHASE HEAT SINGLE-PHASE MOTOR</b>						
208	1ø	2	22	116.1	--	150
220	1ø	2	18.5	94.0	89.0	125
230	1ø	2	20.4	98.6	93.6	125
240	1ø	2	22	101.7	93.6	150
<b>THREE-PHASE HEAT SINGLE-PHASE MOTOR</b>						
208	3ø	3	22	71.4	--	90
220	3ø	3	18.5	58.5	53.4	70
230	3ø	3	20.4	62.2	56.1	80
240	3ø	3	22	63	57.8	80
380	3ø	3	18.5	--	34.7	50
400	3ø	3	20.4	--	36.1	50
416	3ø	3	22	--	37.2	50
<b>THREE-PHASE HEAT THREE-PHASE MOTOR</b>						
208	3ø	3	22	69	--	90
220	3ø	3	18.5	57	55	80
230	3ø	3	20.4	60	58	80
240	3ø	3	22	61	59	80
380	3ø	3	18.5	--	33	50
400	3ø	3	20.4	--	34	50
416	3ø	3	22	--	35	50
460	3ø	3	20.4	30	--	40
480	3ø	3	22	31	--	40